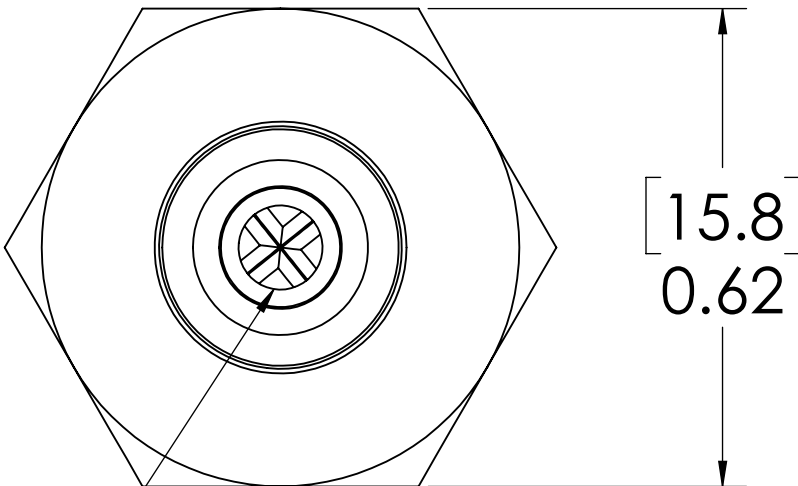
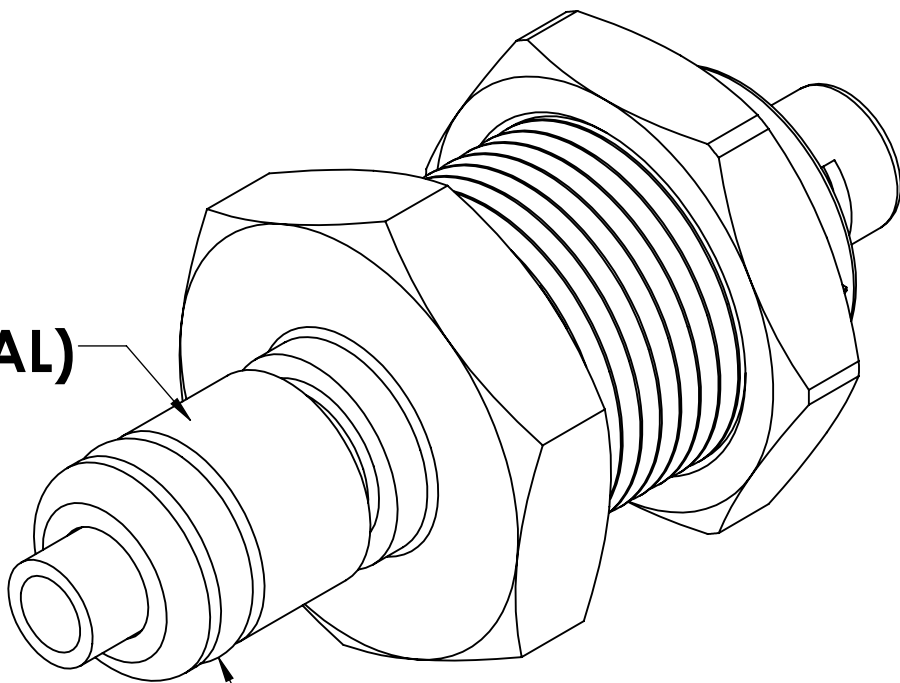
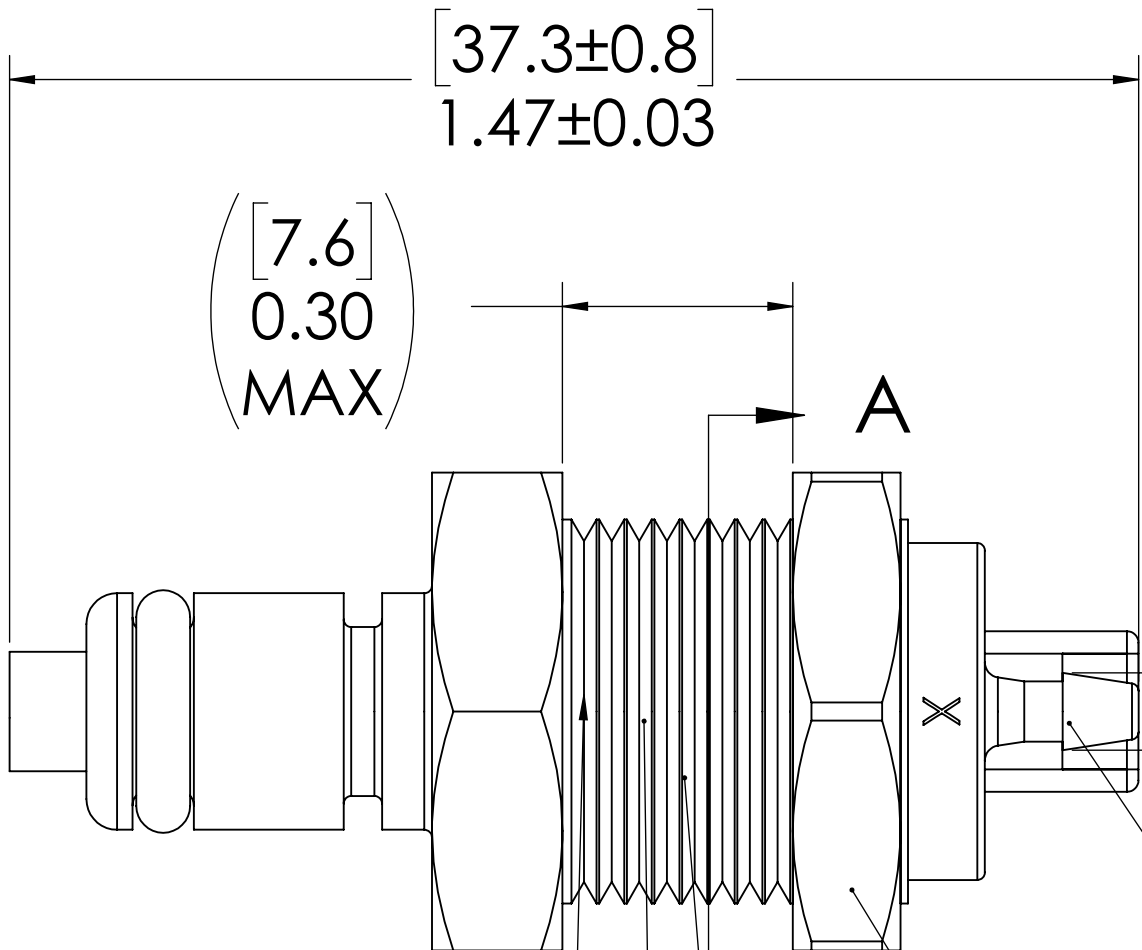


REVISIONS						
SHEET	ZONE	REV.	ECO	DESCRIPTION	DATE	APPROVED
1	ALL	A	50243	UPDATE VALVE SPRING PART #	4/12/2018	HRC



VALVE,  
(ACETAL)

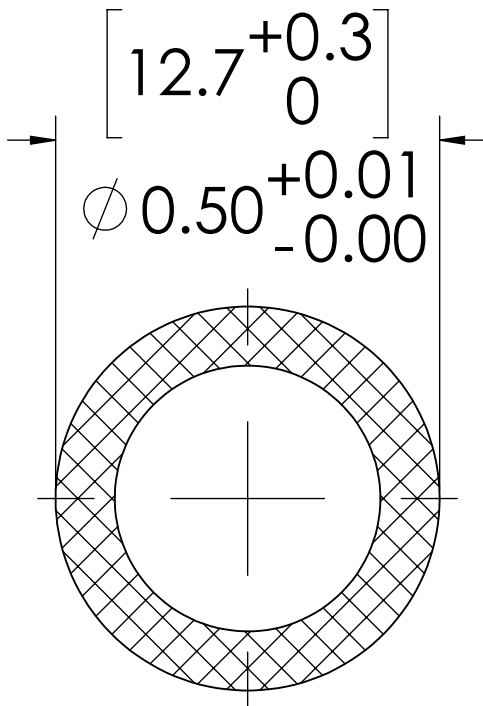


VALVE SPRING,  
INTERNAL  
(STAINLESS STEEL)

VALVE O-RING,  
INTERNAL  
(BUNA-N)

1/2"-24 THREAD

PANEL NUT,  
5/8" HEX  
(BRASS, NICKEL PLATED)  
PACKAGED SEPARATELY




PANEL OPENING  
(SECTION A-A)

NOTES:

- MATERIAL: ACETAL
- COLOR: NATURAL WHITE
- O-RING MATERIAL: BUNA-N
- O-RINGS LUBRICATED WITH FOOD GRADE SILICONE OIL, 350 CST.

FOR REFERENCE ONLY

UNLESS OTHERWISE SPECIFIED:				NAME		DATE		
DIMENSIONS ARE IN INCHES TOLERANCES: FRACTIONAL $\pm 1/32$ ANGULAR, MACH $\pm 0.5$ BEND $\pm 2$ ONE PLACE DECIMAL $\pm 0.1$ TWO PLACE DECIMAL $\pm 0.01$ THREE PLACE DECIMAL $\pm 0.005$ TWO PLACE DECIMAL (mm) $\pm 0.12$				DRAWN	ER	10-05-17		
PROPRIETARY AND CONFIDENTIAL  THE INFORMATION CONTAINED IN THIS DRAWING IS THE SOLE PROPERTY OF LINKTECH LLC. ANY REPRODUCTION OR DISCLOSURE IN PART OR AS A WHOLE WITHOUT THE WRITTEN PERMISSION OF LINKTECH LLC IS STRICTLY PROHIBITED.				CHECKED	HRC	10-05-17	PART NO:	
				ENG APPR.	HRC	4/12/18	20ACV-PB3-01	
				MFG APPR.	BDB	4/12/18	DESCRIPTION:	
				PURCHASING	RK	4/12/18	LinkTech 20AC Series Panel Mt. Male, Valved, 1/16" HB, Natural Acetal	
				COMMENTS:			SIZE	DWG. NO.
							C	20AC200366
							SCALE: NTS	WEIGHT:
							SHEET 1 OF 1	